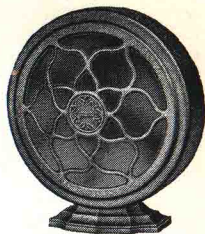


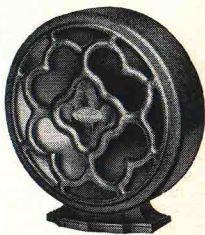
\$25. CROSLEY Dynacone



The Crosley Dynacone, with full power and faithful reproduction of every nuance and inflection of music and speech, was the overwhelming choice of radio lovers this season. Its tremendous popularity is due to its brilliant performance and that performance is the result of a design which actuates the field magnets of the speaker by direct current taken from the set itself instead of by the use of permanent horseshoe magnets. The Dynacone is made in two types, Type E being for the Gembox and Type F for the Showbox and the New Jewelbox. Type F can be obtained either in white gold or gold finish to match the set.

The Dynacone measures 11½ inches wide, 12¾ inches high and 3¾ inches deep. Both types are priced at \$25.

\$15. CROSLEY Musicone



Among the best of magnetic type speakers, the Crosley Musicone has won and maintained a position of popularity because of exceptional performance coupled with low price. It is the speaker for battery operated sets and also works excellently on any A-C Electric Set. It is popularly priced at \$15.

CROSLEY RADIO RECEIVERS TUNED TO WLW
GIVES THE UTMOST IN RADIO

CROSLEY RADIO

1929

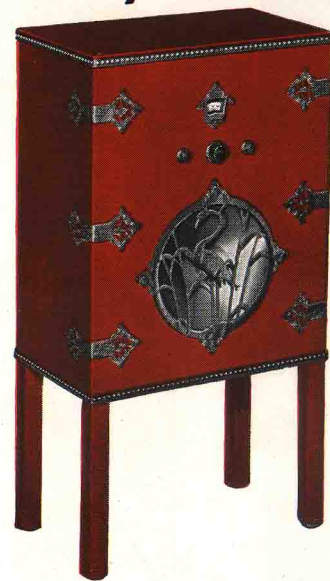


you're there with a Crosley

CROSLEY RADIO in Colorful Chinese Design Brings Charming Note to the Home

SHOWCHEST
8 Tubes
Dynacone

\$109.
tubes extra



GEMCHEST
6 Tubes
Dynacone

\$94.
tubes extra

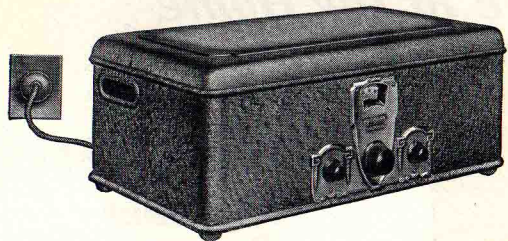
PERFORMANCE housed in beauty—and at the world's lowest price for standard radio! Decorative motifs for the modern home, the Crosley Showchest and Gemchest are presented in a modification of Chinese Chippendale designed especially for the living room of the modern American home. In size they are exactly right for the small apartment—unobtrusive in the larger room—a simple problem in artistic arrangement for any room.

Supplied in three colors—Mandarin Red with metal-work of brown gold, Nanking Green with brown gold trimmings and Manchu Black with white gold trimmings.

The Gemchest is equipped with the famous Crosley A. C. Electric Gembox and the Crosley Dynacone power speaker, which at \$25 has been welcomed and acclaimed wherever radio is known. The Showchest presents the immensely popular Showbox in dress of Chinese Chippendale. In it also is installed the Crosley Dynacone. Details regarding both of these exceptional radios are found elsewhere in this folder.

Let us arrange a demonstration of the Showchest or Gemchest in your home. Add tubes, attach to any aerial, turn on the power from the house lighting circuit, and it is ready to perform.

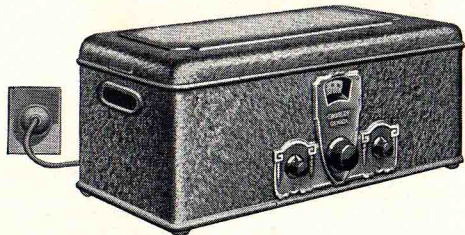
The SHOWBOX \$80.



The Crosley Showbox was the outstanding success of radio in 1928. It is a completely shielded, genuine neutrodyne circuit. It has three stages of radio frequency detector, and two stages of audio frequency, the last in push-pull hookup. Supplied either in gold white gold ripple finish.

The Showbox uses the following tubes: Radio Frequency three 226 A-C tubes, detector one 227 A-C tube, first stage audio one 226 A-C tube, second stage audio two 171-A power tubes, rectifier one 280 A-C tube. Length 18 inches, depth 11½ inches, height 7¼ inches. The Showbox is also supplied for direct current and operates from 110 volt power supply.

The GEMBOX \$65.



The lowest priced, first class, standard radio receiver the Crosley Gembox has already given pleasure and real radio satisfaction to thousands. It has six tubes, including the rectifier, neutrodyne circuit, illuminated dial, complete shielding and operates the Dynacone power speaker.

The Gembox uses the following tubes: Radio Frequency, two 226 A-C tubes, detector one 227 A-C tube, first stage audio one 226 A-C tube, second stage audio one 171-A power tube, rectifier one 280 A-C tube. Dimensions: Length 17¼ inches, depth 5½ inches, height 7½ inches.

The New CROSLEY JEWELBOX Radio's Finest Receiver

*Four Tuned
Circuits*

*Sensitive
Selective*

*Illuminated
Dial*



*Genuine
Neutrodyne*

*Operates
Power Speaker*

*Push-Pull
Audio System*

IN the New Jewelbox there are four tuned circuits, the grid circuit of the first radio frequency tube being tuned. This results not only in greater selectivity and sensitivity, absence of harmonic response and sharpness of control, but also in vastly improved quality of reproduction. There are four condensers, the three which tune the radio frequency and detector stages being in one gang, while the fourth, which tunes the grid circuit of the first radio frequency tube is operated by the same tuning knob but may be independently adjusted for extremely sharp tuning.

The detector stage is non-regenerative and makes use of "plate rectification" instead of "grid rectification" used in the majority of sets, resulting in greatly improved tone quality. The newly designed audio system gives a more faithful reproduction throughout the entire range. The power unit, utilizing the famed Merphon condenser and the 280 Rectifier tube supplies full voltage for best operation of all the tubes. Genuine neutro-

dyne balancing of the radio-frequency stages ensures quiet efficient operation. A new type of volume control gives volume variation from maximum to zero. This new volume control will not wear out. It lengthens the life of the radio frequency tubes by reducing their load proportionately to the volume at which the set is operated. The New Jewelbox is handsomely dressed in Ripple White Gold finish.

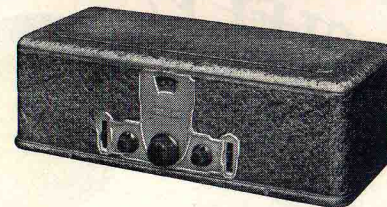
The New Jewelbox operates the Dynacone Type F power speaker, giving faithful reproduction throughout the scale, and all the volume that anyone can ask.

The New Jewelbox uses the following tubes: Radio frequency, Detector and First Audio, five 227 A-C tubes; Second Stage Audio, two 171-A A-C power output tubes; Rectifier, one 280 rectifier tube.

Dimensions: 17¼ inches long, 12½ inches deep, 7½ inches high.

\$105.
tubes extra

The BANDBOX \$55.



The Crosley Bandbox needs no introduction. It stands alone in the storage battery field. It is a six tube set, genuine neutrodyne circuit, completely shielded, illuminated dial, accumulators for sharp tuning and many other desirable features. We would advise the Type D Musicone as the proper speaker for the Bandbox.

The Bandbox uses the following tubes: Radio frequency three 201-A tubes, detector one 201-A tube, first stage audio one 201-A tube, second stage audio one 171-A power tube. Dimensions: Length 17¼ inches, depth 7½ inches, height 5½ inches.

The BANDBOX Jr. \$35.



In spite of the overwhelming popularity of the A-C Radio, there are still many places in which a dry cell set is the only practical receiver. The 5-tube Crosley Bandbox Jr. has given such a good account of itself that we can recommend it without hesitation. It has two stages of radio frequency, detector and two stages of audio frequency, with power to operate the Musicone. The circuit is genuine neutrodyne. The Bandbox Jr. uses four 199 dry cell tubes and one 120 dry cell power tube. Dimensions: Length 13½ inches, depth 7½ inches, height 5½ inches.

Crosley table models are housed in attractively finished metal cabinets. If desired, the cabinet may be removed and the set installed in a piece of furniture—either one of the handsome consoles designed expressly for these models or in an antique desk, bookcase or similar piece of furniture.